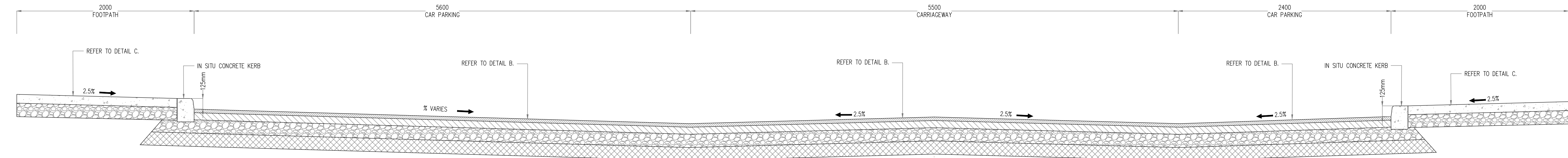
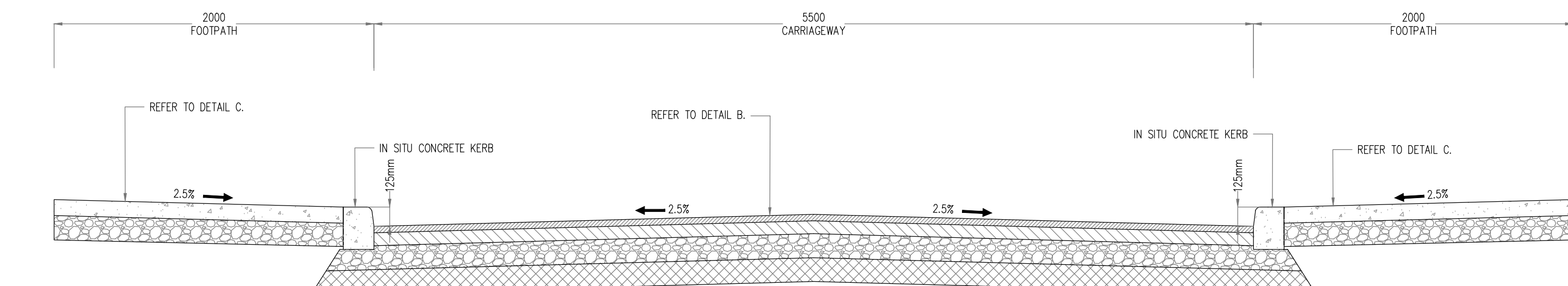


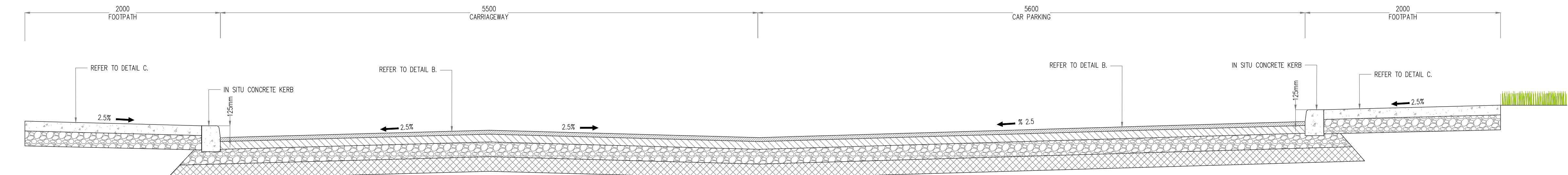
SECTION A-A
SCALE 1:25



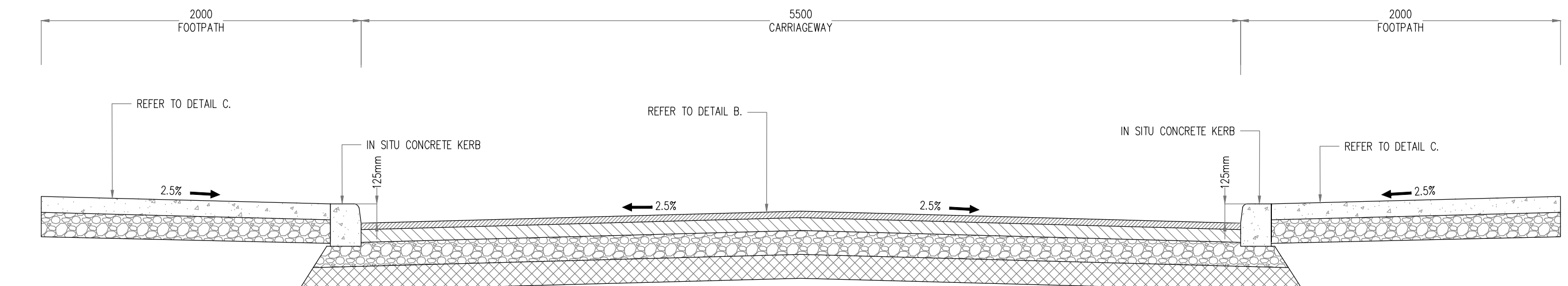
SECTION B-B
SCALE 1:25



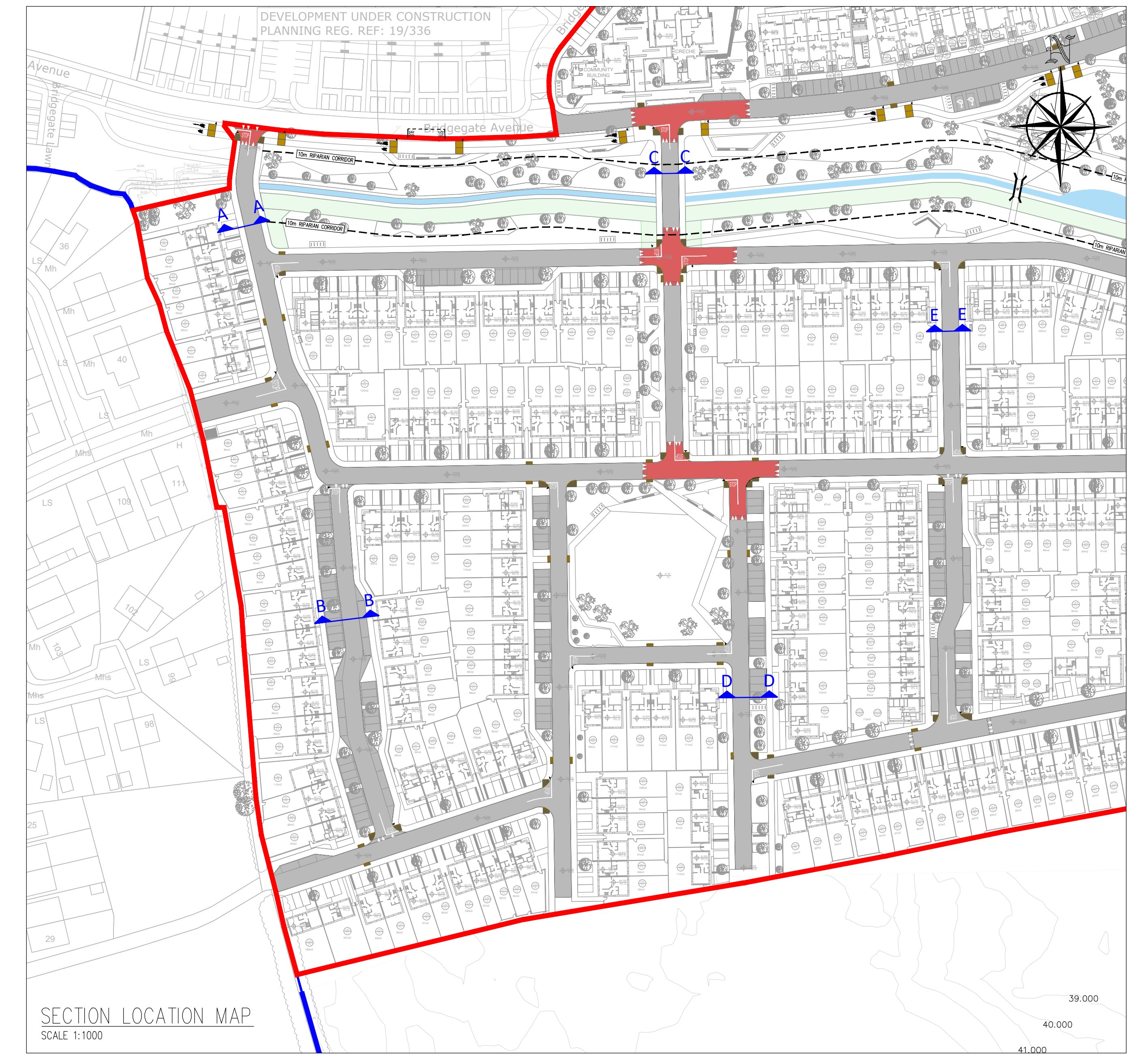
SECTION C-C
SCALE 1:25



SECTION D-D
SCALE 1:25



SECTION E-E
SCALE 1:25



SECTION LOCATION MAP
SCALE 1:1000

TABLE 1

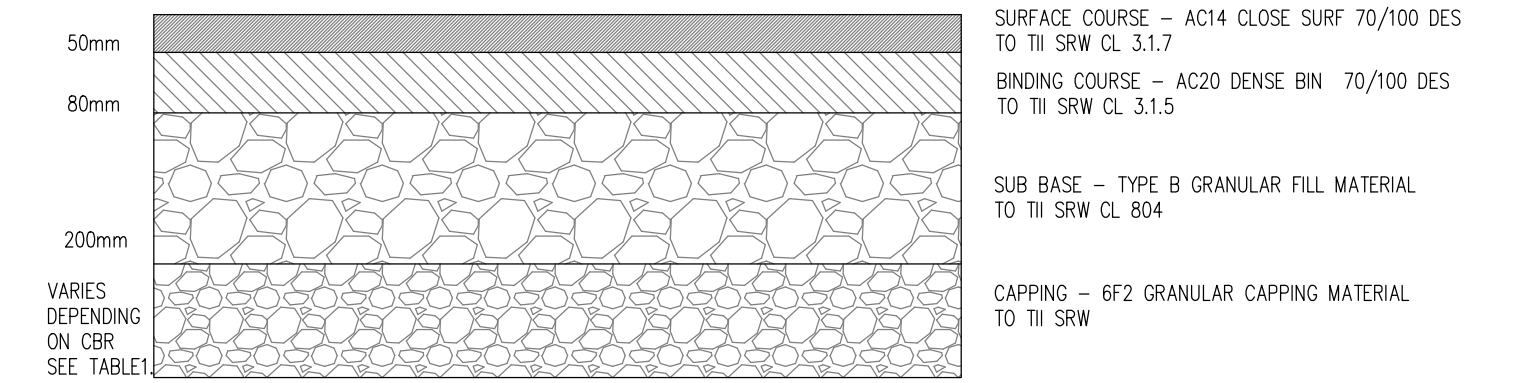
FLEXIBLE PAVEMENT

THE MINIMUM REQUIRED THICKNESS OF NON-FROST SUSCEPTIBLE CAPPING MATERIAL IS SHOWN HEREUNDER -

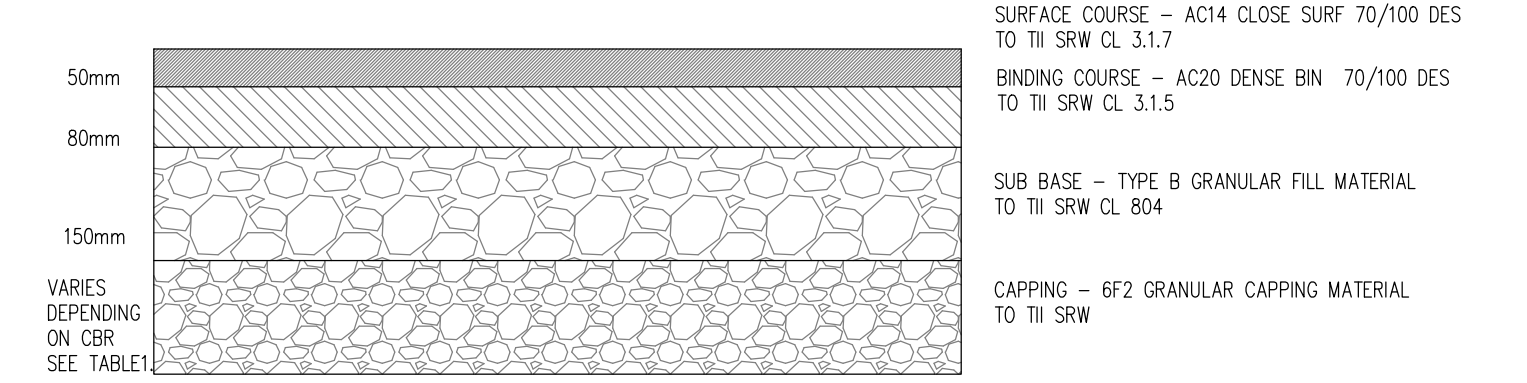
CBR SUBGRADE	BELOW	2	5	15	15+
%	2				
THICKNESS OF GEGRID					NO
CAPPING(mm)	DESIGN	300	150		CAPPING

CBR TESTS SHALL BE CARRIED OUT AT A RATE OF ONE TEST PER 100 METERS OF ROAD

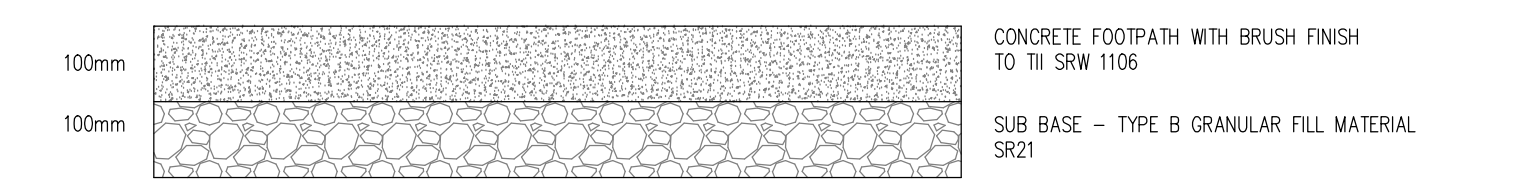
ALL ROADS DESIGNED IN ACCORDANCE WITH THE RECOMMENDATIONS FOR SITE DEVELOPMENT WORKS AND WITH REFERENCE TO THE DESIGN MANUAL FOR URBAN ROADS AND STREETS



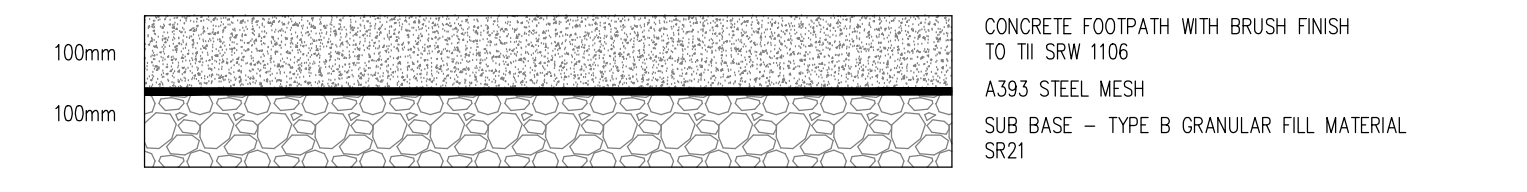
DISTRIBUTOR ROADS CONSTRUCTION - DETAIL A



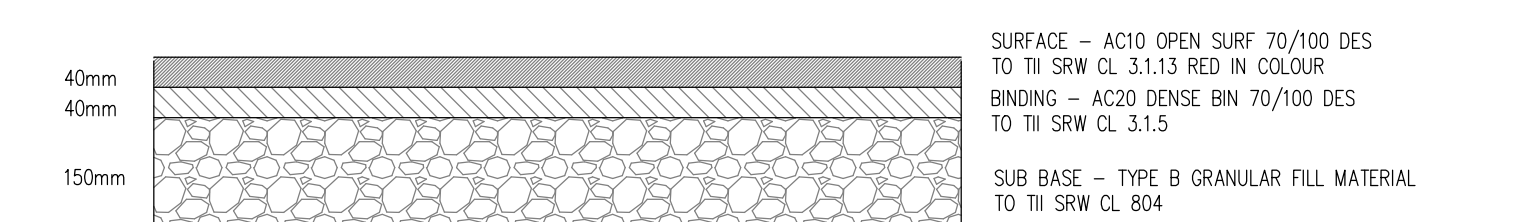
LOCAL ROADS CONSTRUCTION - DETAIL B



CONCRETE FOOTPATH CONSTRUCTION - DETAIL C



TYPICAL DRIVE OVER CONCRETE FOOTPATH CONSTRUCTION - DETAIL D



BITUMINOUS CYCLEPATH CONSTRUCTION - DETAIL E

PLANNING DRAWING.
NOT FOR CONSTRUCTION.
ALL LEVELS GIVEN ARE
RELATIVE TO ORDNANCE DATUM.
THIS DRAWING HAS BEEN ISSUED FOR INFORMATION
PURPOSES ONLY AND MUST NOT BE USED
FOR CONSTRUCTION UNDER ANY CIRCUMSTANCES.

NOTES
1. For setting out refer to Architect's drawings.
2. This drawing to be read in conjunction with all other Architectural and Engineering drawings and all other relevant drawings and Specifications.
3. DO NOT SCALE THIS DRAWING. Use figured dimensions only.
4. No part of this document may be reproduced or transmitted in any form or stored in any retrieval system of any nature without the written permission of copyright holder except as agreed for use on the project for which the document was originally issued.
5. Ordnance Survey Ireland Licence Number EN 0074022

Rev No	Date	REVISION/NOTE	Drawn By	Checked By
01	03/12/2021	ISSUED FOR PLANNING STAGE 2	JS	GR

Client	THE ARDEE PARTNERSHIP BRIDGEGATE SHD, ARDEE, CO. LOUTH
Title	ROAD CROSS SECTIONS
Drawn By	ARDEE-CSC-00-XX-DR-C-1011
Date	August 2020
Discipline	DD
Author	HS
Checker	NB
As Shown By	AS SHOWN BY
Revision	P1

C/S Consulting Group
DUBLIN | LONDON | LIMERICK
Head Office
19-20 Dame Street, Dublin 2
T: +353 (0)1 5480863 F: +353 (0)1 9011355
E: info@csconsulting.ie
W: www.csconsulting.ie
Quality ISO 9001:2008
Environment ISO 14001:2004
Health & Safety OHSAS 18001:2007

320 No R098